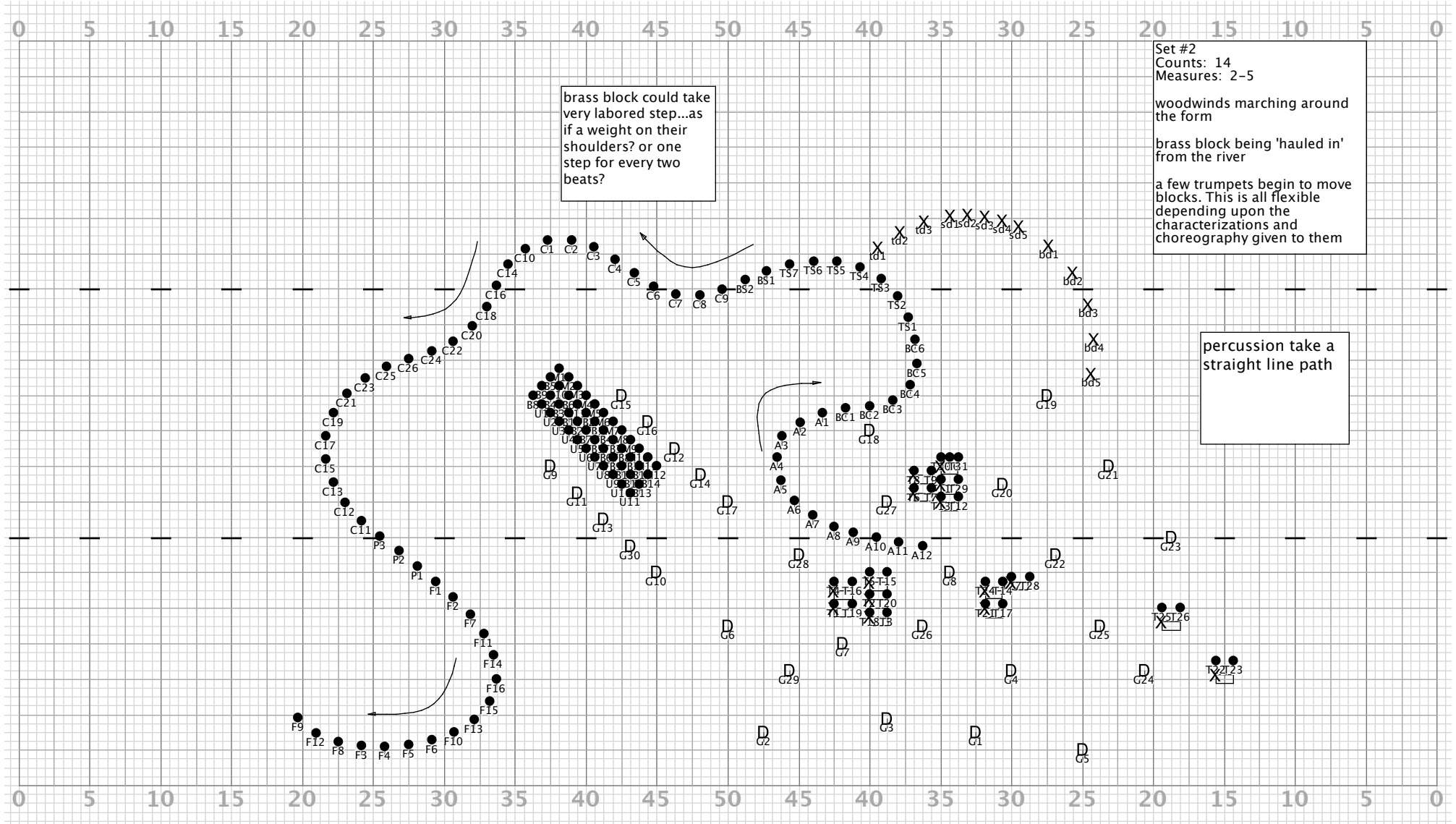


Director Viewpoint

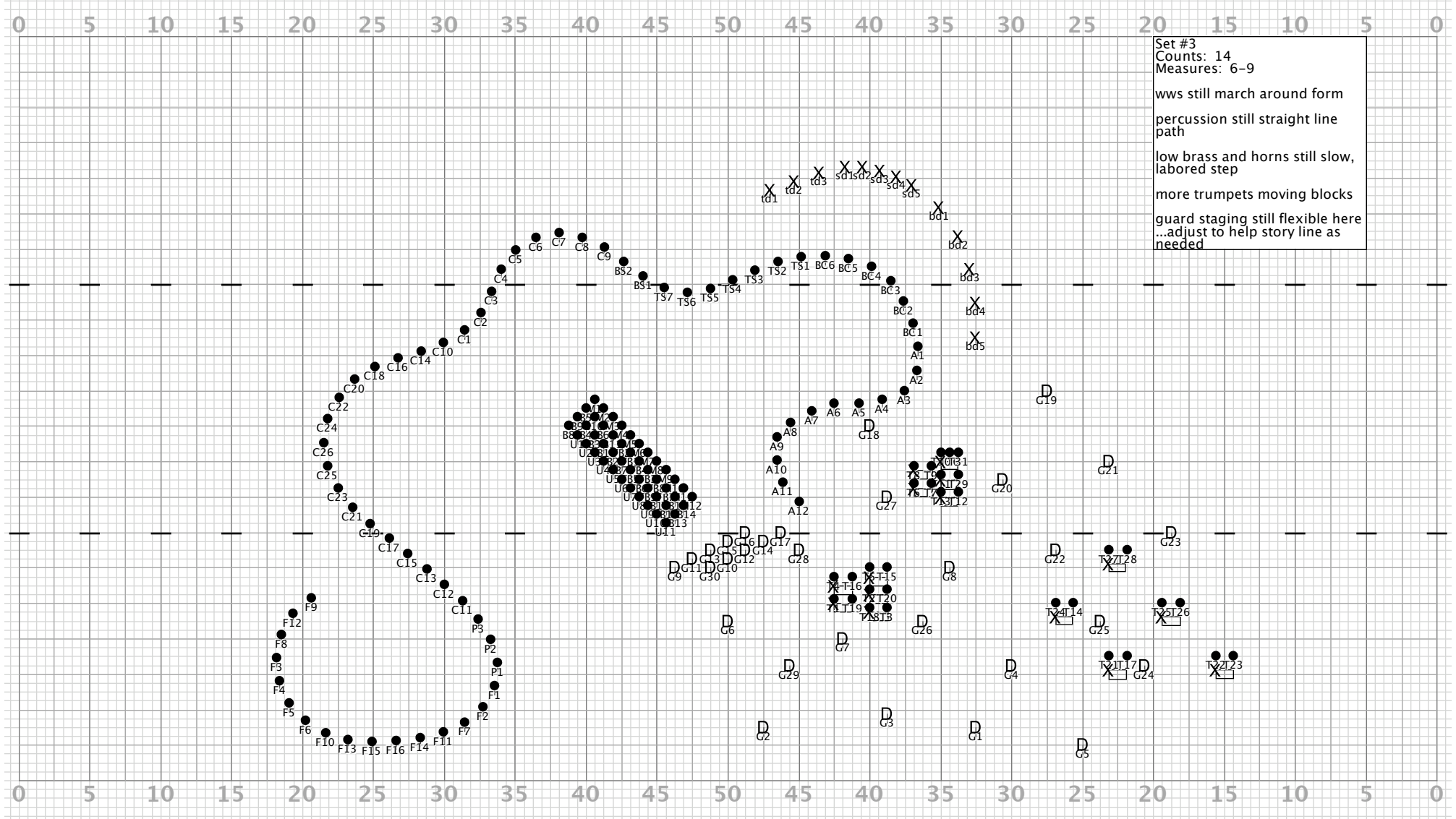


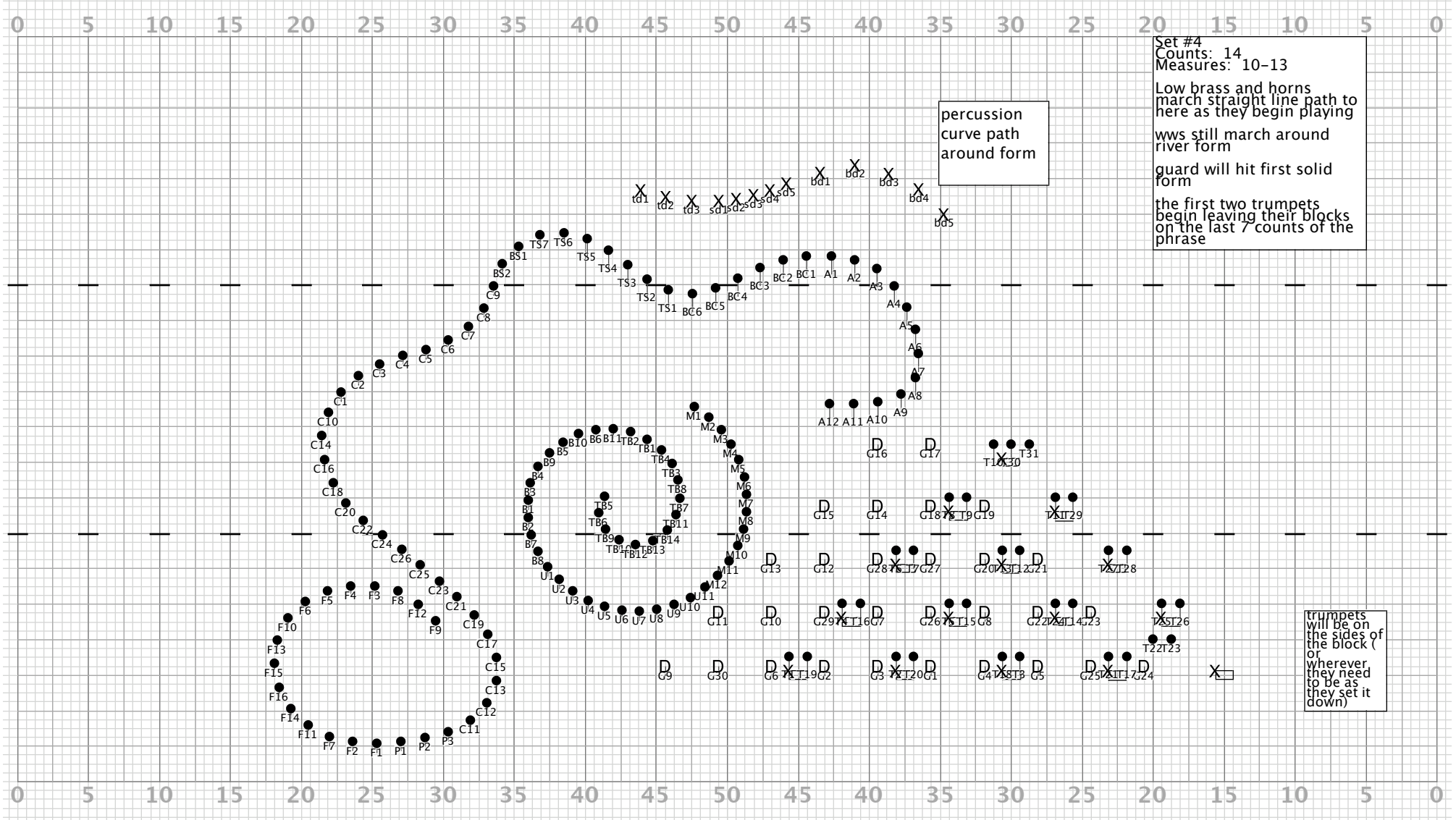
brass block could take very labored step...as if a weight on their shoulders? or one step for every two beats?

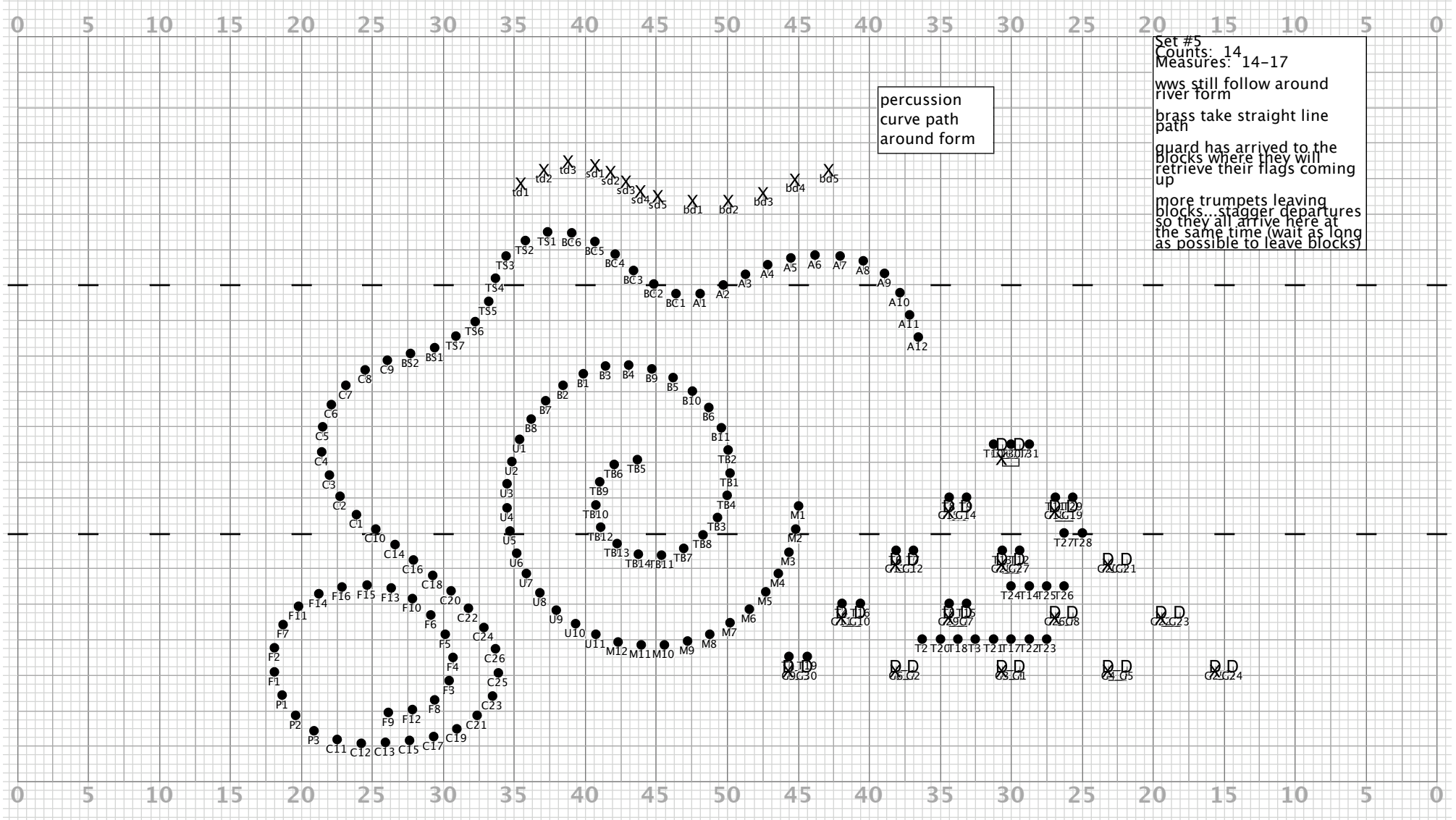
Set #2
Counts: 14
Measures: 2-5
woodwinds marching around the form
brass block being 'hauled in' from the river
a few trumpets begin to move blocks. This is all flexible depending upon the characterizations and choreography given to them

percussion take a straight line path

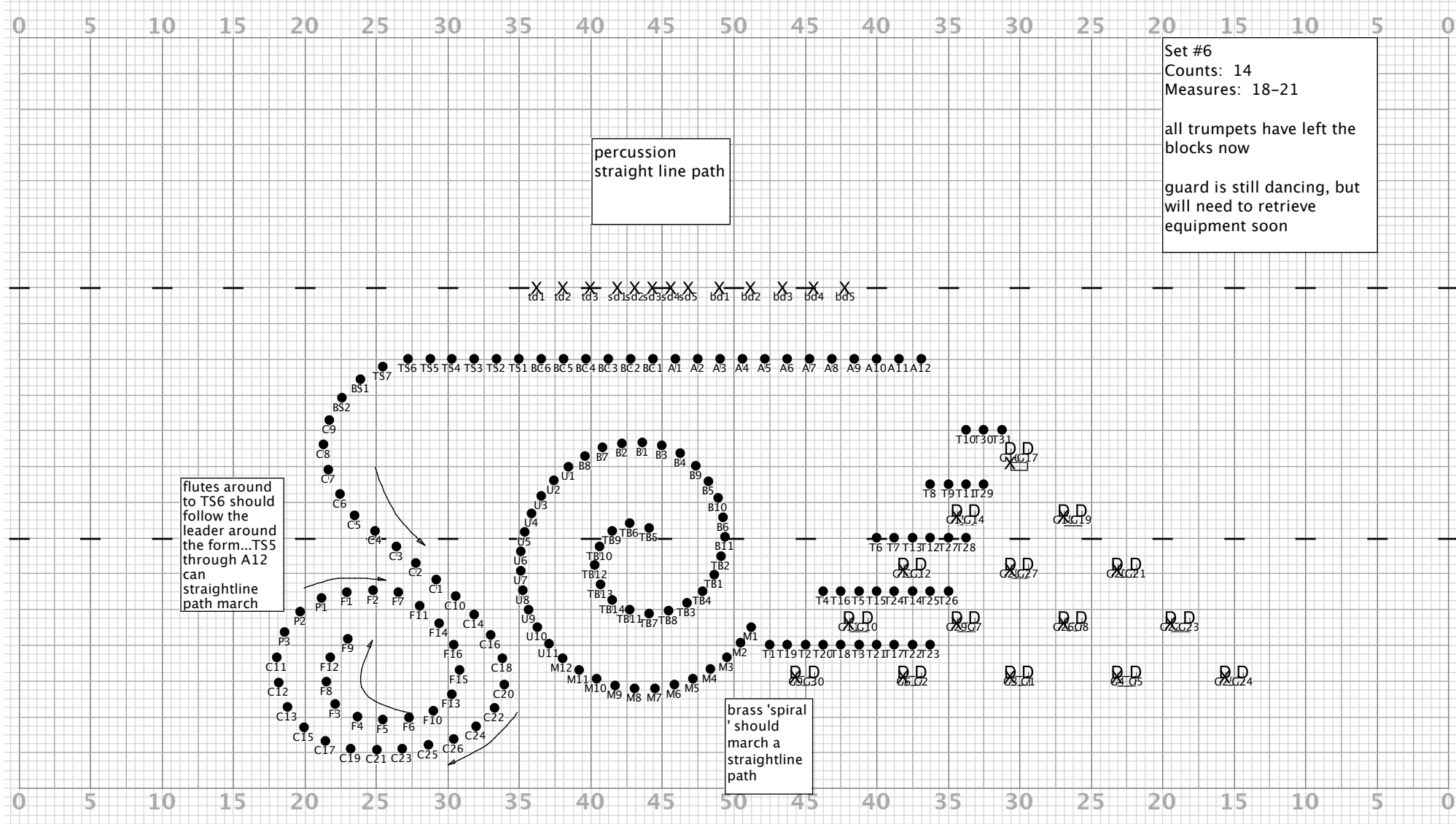
Director Viewpoint







Director Viewpoint



Set #6
Counts: 14
Measures: 18-21

all trumpets have left the blocks now

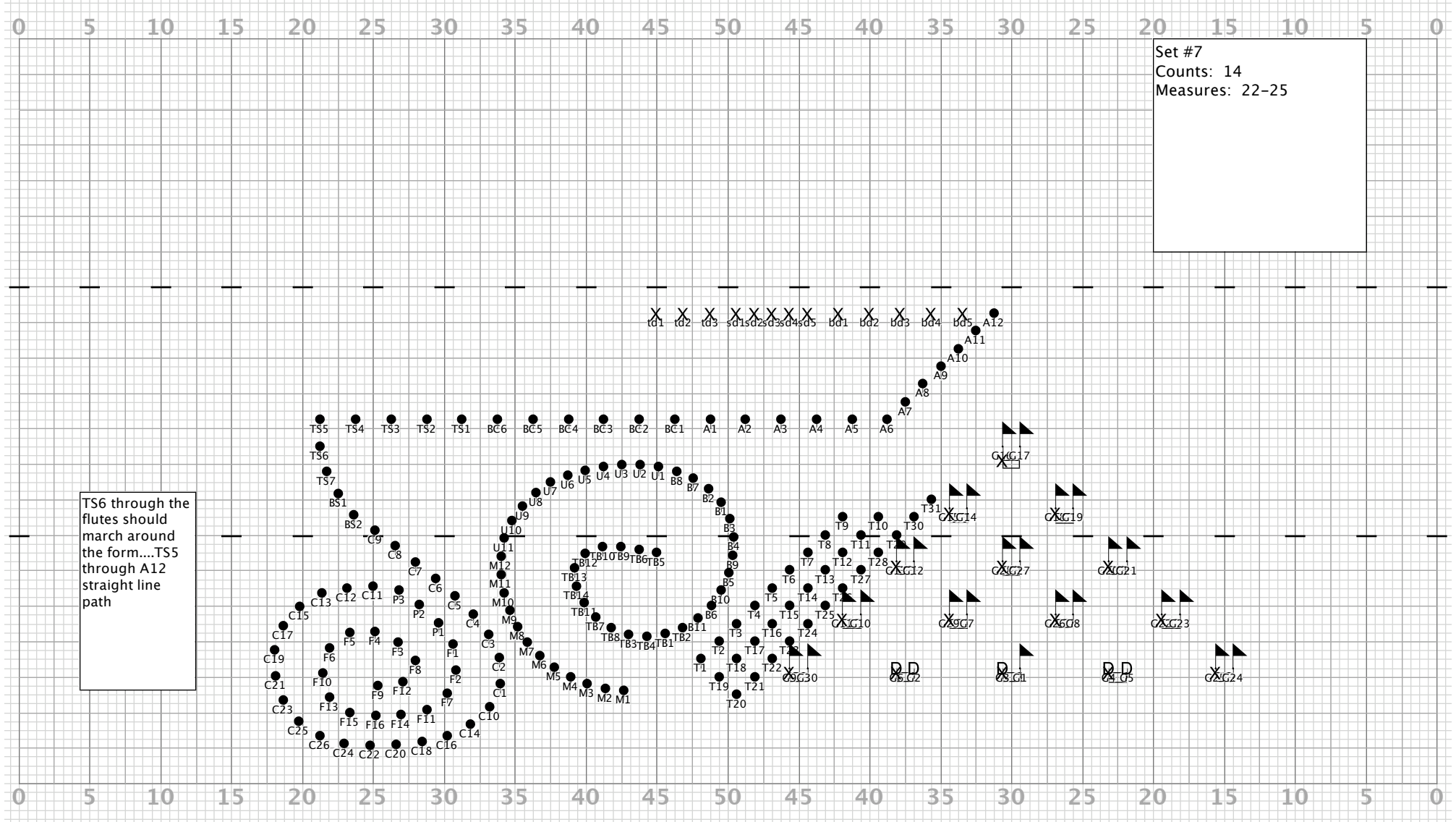
guard is still dancing, but will need to retrieve equipment soon

flutes around to TS6 should follow the leader around the form...TS5 through A12 can straightline path march

percussion straight line path

brass 'spiral' should march a straightline path

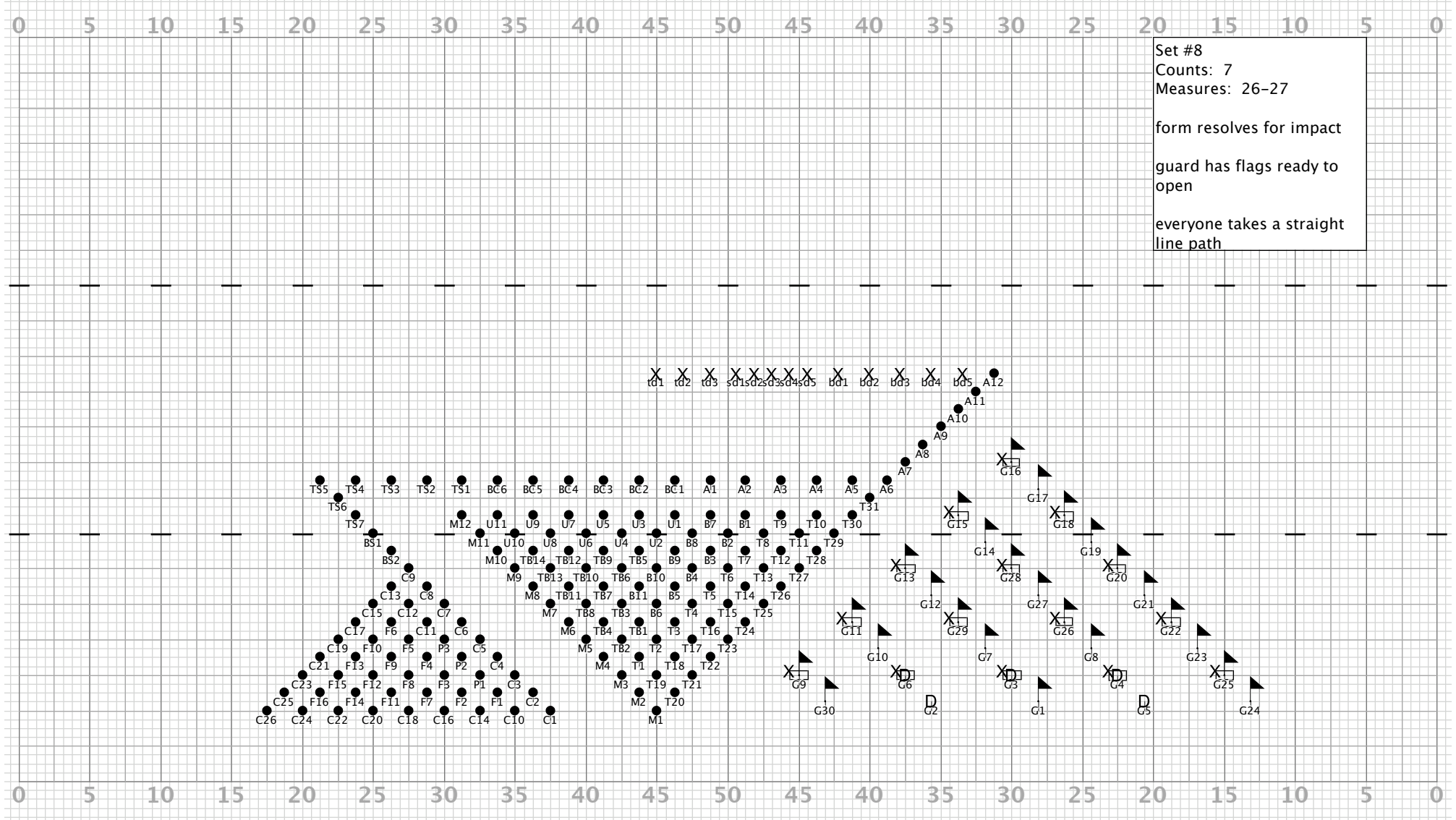
Director Viewpoint



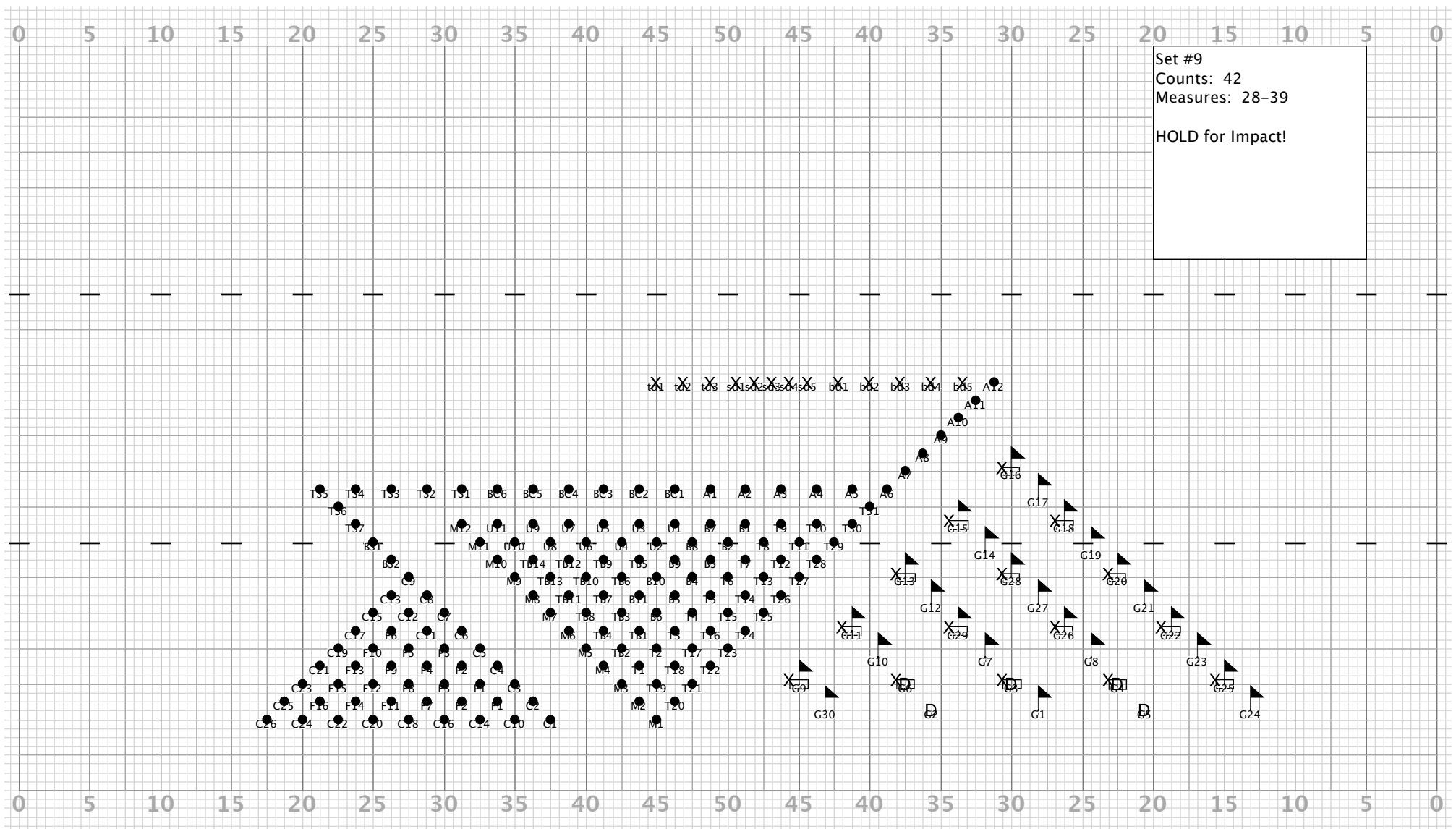
TS6 through the flutes should march around the form....TS5 through A12 straight line path

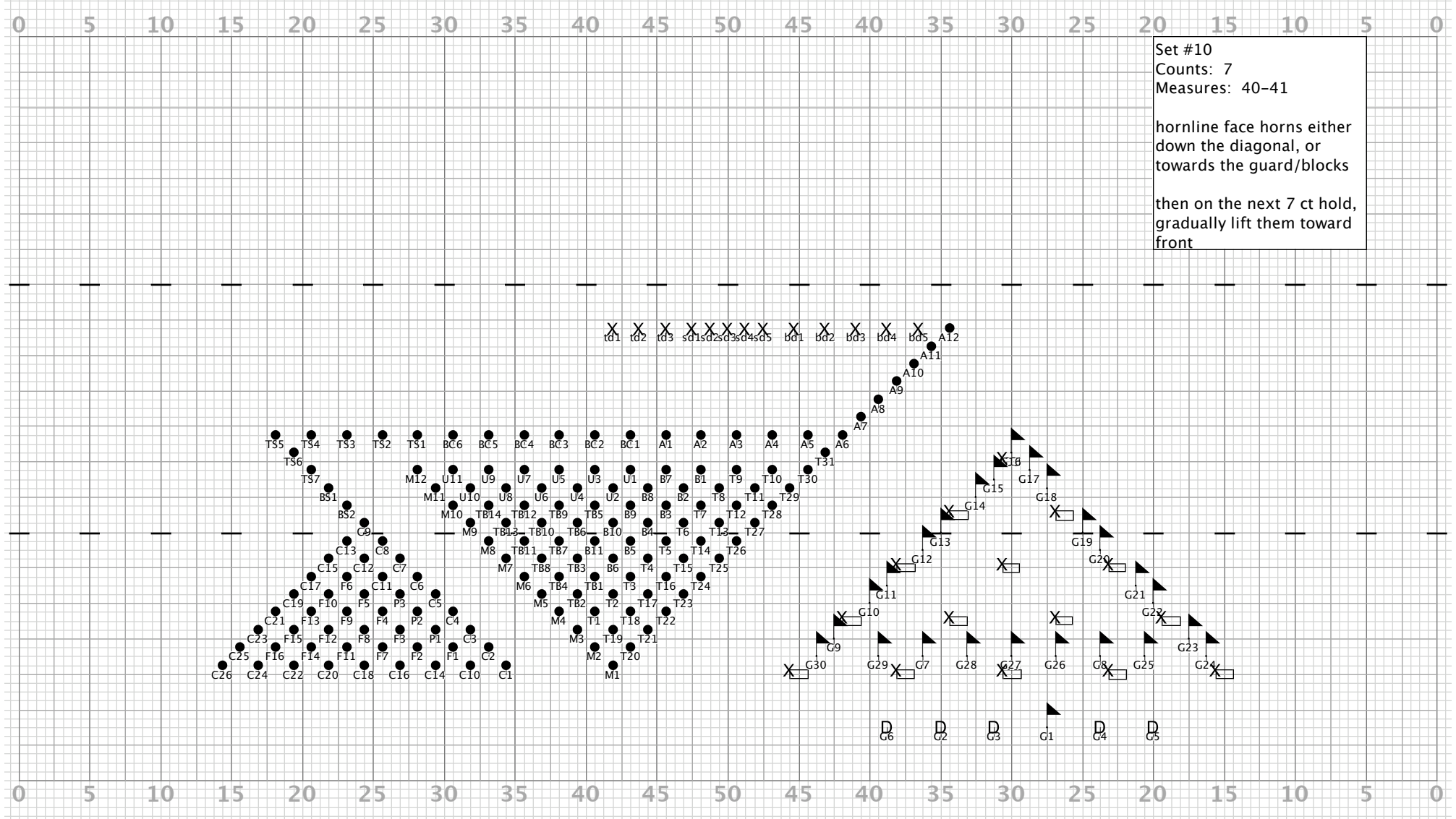
Set #7
Counts: 14
Measures: 22-25

Director Viewpoint



Director Viewpoint



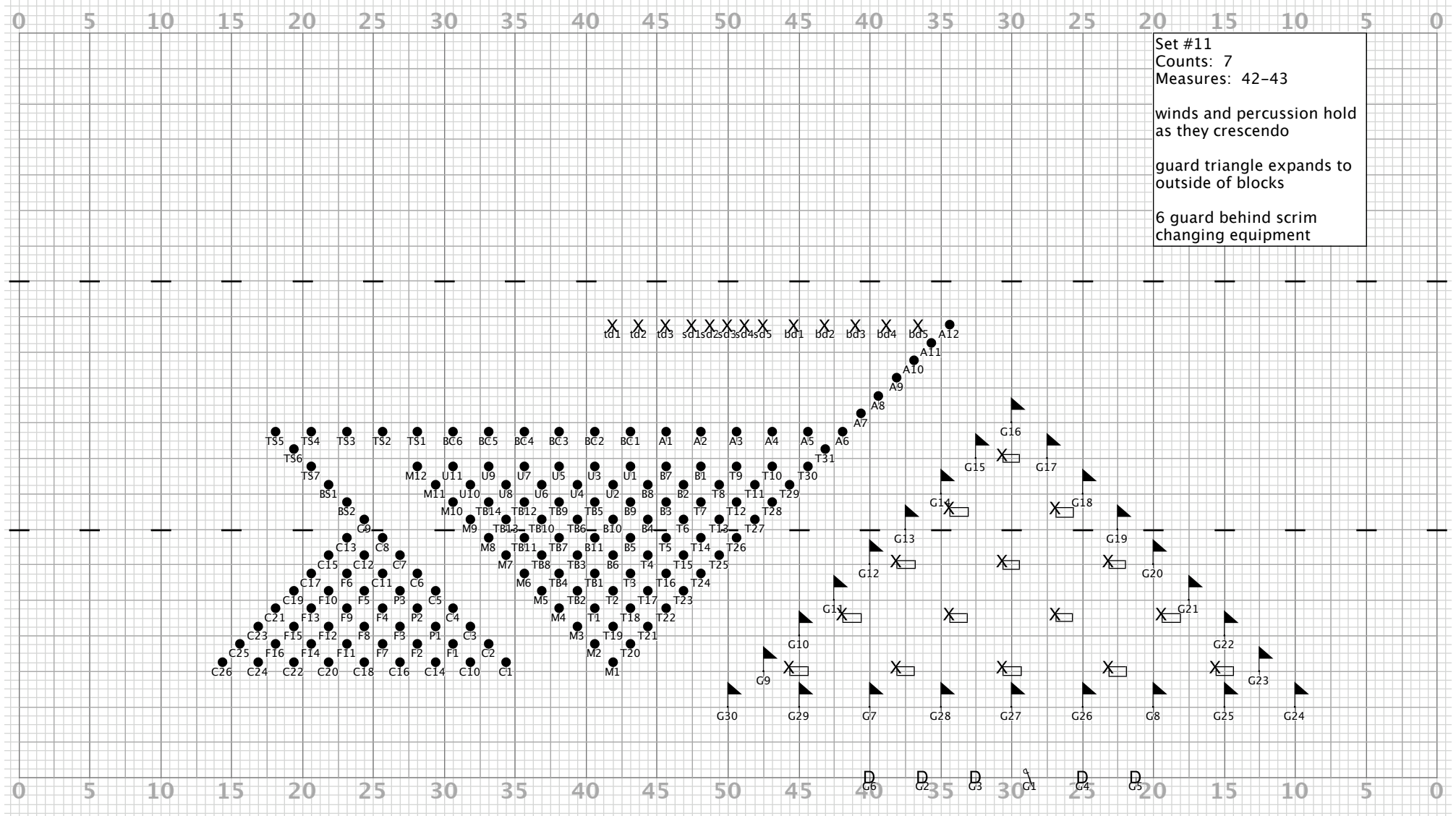


Set #10
Counts: 7
Measures: 40-41

hornline face horns either
down the diagonal, or
towards the guard/blocks

then on the next 7 ct hold,
gradually lift them toward
front

Director Viewpoint



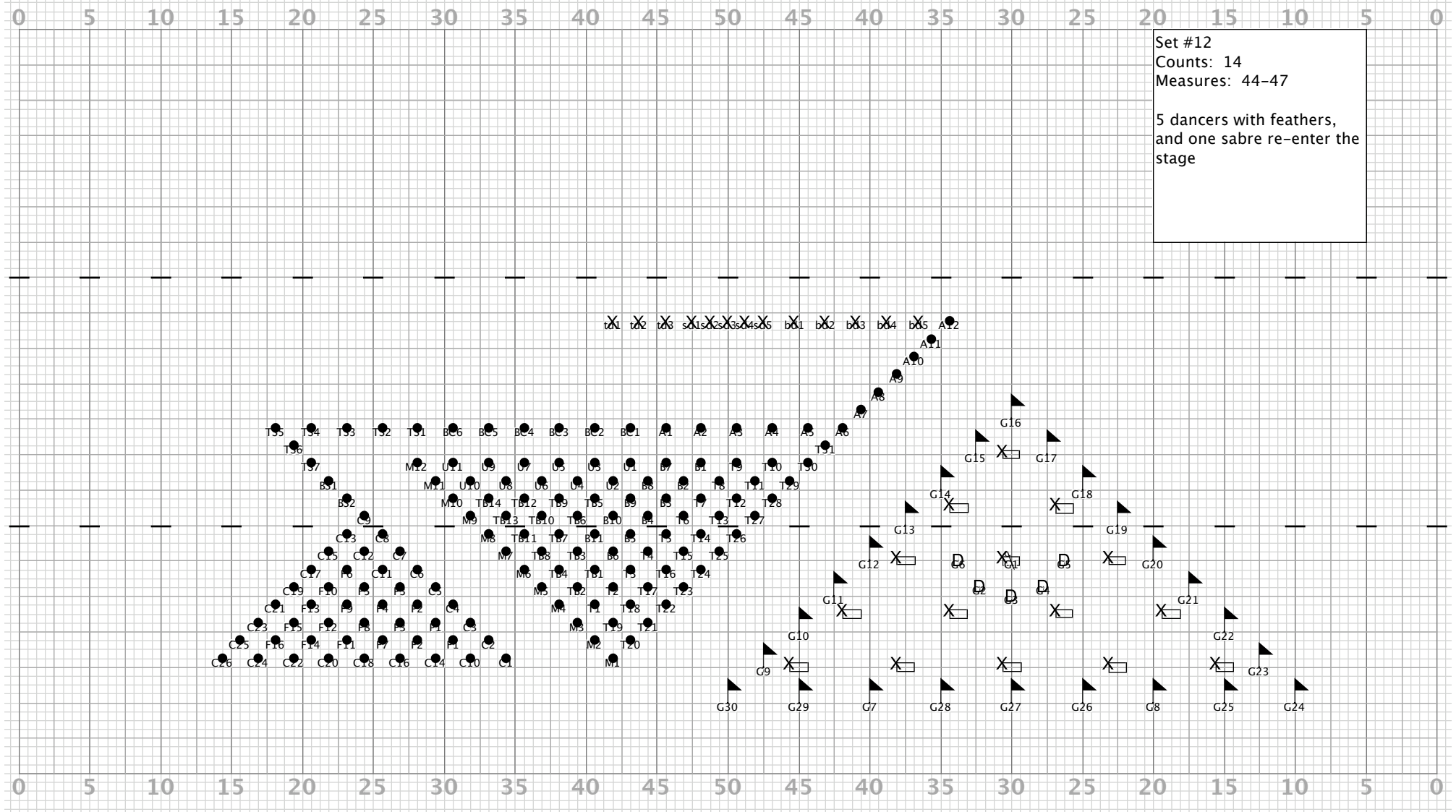
Set #11
Counts: 7
Measures: 42-43

winds and percussion hold
as they crescendo

guard triangle expands to
outside of blocks

6 guard behind scrim
changing equipment

Director Viewpoint



Set #12
Counts: 14
Measures: 44-47

5 dancers with feathers,
and one sabre re-enter the
stage

Director Viewpoint